

Clinical Monitoring Scales in Acute Brain Injury: Assessment of Coma, Pain, Agitation, and Delirium

Richard R. Riker · Jennifer E. Fugate ·

And the Participants in the International Multi-disciplinary Consensus Conference on Multimodality Monitoring

© Springer Science+Business Media New York 2014

Abstract Serial clinical examination represents the most fundamental and basic form of neurological monitoring, and is often the first and only form of such monitoring in patients. Even in patients subjected to physiological monitoring using a range of technologies, the clinical examination remains an essential tool to follow neurological progress. Key aspects of the clinical examination have now been systematized into scoring schemes, and address consciousness, pain, agitation, and delirium (PAD). The Glasgow Coma Scale has been the traditional tool to measure consciousness, but the full outline of unresponsiveness (FOUR) score has recently been validated in a variety of settings, and at present, both represent clinically useful tools. Assessment of PAD in neurologically compromised patients present special challenges. For pain, the Numeric Rating Scale is the preferred initial approach, with either the Behavioral Pain Scale or the Critical Care Pain Observation Tool in subjects who are not able to respond. The Nociception Coma Scale-Revised may be useful in patients with severe disorders of consciousness. Conventional sedation scoring tools for critical care, such

as the Richmond Area Sedation Scale (RASS) and Sedation–Agitation Scale (SAS) may provide reasonable tools in some neurocritical care patients. The use of sedative drugs and neuromuscular blockers may invalidate the use of some clinical examination tools in others. The use of sedation interruption to assess neurological status can result in physiological derangement in unstable patients (such as those with uncontrolled intracranial hypertension), and is not recommended.

Keywords Coma · Scale · Neurologic examination · Delirium · Pain · Sedation

Introduction

Although serial clinical examinations represent a central part of neurological evaluation and the foundation for all “neuromonitoring,” this has not been well studied. Several different “coma” scales have been developed and tested for validity, reliability, and accuracy among varying diagnostic groups (e.g., traumatic brain injury, TBI), but none of these have compared monitoring strategies using serial neurological examinations with strategies not including these examinations. The related assessments of pain, agitation, and delirium (PAD) have received recent attention among general intensive care unit (ICU) patients, but less so among neurocritical care patients.

Methods and Search Criteria

Using the PubMed database, we conducted a literature search that included the terms: “coma” OR “Glasgow Coma Scale” OR “GCS” OR “FOUR score” OR “Full

The Participants in the International Multi-disciplinary Consensus Conference on Multimodality Monitoring are listed in “[Appendix 1](#)”.

R. R. Riker (✉)
Department of Critical Care Medicine, Maine Medical Center
and Maine Neuroscience Institute, 22 Bramhall Street, Portland,
ME 04102, USA
e-mail: rriker@emamaine.com

R. R. Riker
Tufts University School of Medicine, Maine Medical Center,
Portland, ME, USA

J. E. Fugate
Department of Neurology, Mayo Clinic, Rochester, MN, USA

Outline of Unresponsiveness” AND “brain injury” OR “traumatic brain injury” OR “TBI” OR “subarachnoid hemorrhage” OR “SAH” AND “intensive care.” We restricted article language to English and did not consider unpublished or abstracts. A second search was performed using the keywords: “fixed pupil” OR “dilated pupil” OR “blown pupil” AND “brain injury” OR “traumatic brain injury” OR “TBI” OR “subarachnoid hemorrhage” OR “SAH” AND “intensive care.” An additional search was performed using the following keywords: “pupillomet*” AND “brain injuries” which yielded seven references. Finally, we searched for eligible studies using the following keywords: “delirium” OR “pain” OR “sedation” OR “agitation” AND “brain injury” AND “(intensive OR critical) care” AND “English Language” which yielded 330 references. These titles and abstracts were reviewed, as were personal files, reference lists of review articles, and reference lists in eligible studies for additional trials.

Study Selection and Data Collection

We independently reviewed citations, abstracts, and full-text articles to select eligible studies. We excluded: (a) review articles; (b) case reports or case series with ≤ 5 patients; (c) experimental studies; (d) study on pediatric ICU populations (< 18 years); data were abstracted using a predefined abstraction spreadsheet, according to the PICO system.

Review Endpoints

The end-points of this review were to answer the following questions related to clinical assessment of brain-injured patients:

Consciousness Scales

- Should assessments with clinical coma scales be routinely performed in comatose adult patients with acute brain injury?
- For adult comatose patient with acute brain injury, is the GCS score more reliable than the FOUR score in the clinical assessment of coma?
- Is the FOUR score a better predictor of clinical outcomes compared to the GCS score?

Pain, Agitation, and Delirium

- Which pain scales have been validated and shown to be reliable among patients with brain injuries cared for in neurocritical care units (NCCU)?
- Which pain scales have been validated and shown to be reliable among patients with severe disorders of consciousness (minimally conscious state or MCS and unresponsive wakefulness syndrome or UWS).

- Which “sedation” scales are valid and reliable in brain-injured patients cared for in neurocritical units?
- What other sedation strategies may lead to improved outcomes for brain-injured patients?
- Which delirium scales are valid and reliable in brain-injured patients cared for in neurocritical units?

Consciousness Scales

Summary of the Literature

Glasgow Coma Scale

The Glasgow Coma Scale (GCS), introduced in the 1970s [1], is commonly reported as a single number summing the three components. Though widely studied and incorporated into many scoring systems, interrater reliability of the GCS has been inconsistent [2–5]. These studies report a wide range of κ scores (ranging, for example, from 0.39 to 0.79 in one study). Disagreement ratings tend to be higher between professions (nursing vs. medical practitioners) for the motor score, particularly among inexperienced staff, and for patients who had intermediate scores. Disagreement is lowest within specialist professional groups (e.g., neurocritical care nurses) for the verbal component, and when assessing alert or drowsy subjects.

The best immediate post-resuscitation GCS sum score or the GCS encountered in the field by paramedics has been studied as a prognostic marker. The sum GCS on ED arrival is a strong predictor of in-hospital mortality (area-under-the ROC curve, AUC of 0.91) and need for neurosurgical intervention (AUC of 0.87) [6], with the eye score the weakest predictor and sum score the best. An initial GCS sum score of 3 is associated with poor clinical outcomes in TBI (mortality 50–76 %) [7–9]. However, outcome is largely influenced by the extent of brainstem injury—particularly pupillary light responses, a finding not captured by the GCS. The GCS sum score is associated with outcomes in posterior circulation acute ischemic strokes [10, 11], though this is not a consistent finding [12]. The GCS is a good predictor of outcome in post-cardiac arrest patients treated with therapeutic hypothermia; GCS > 4 after sedation was stopped predicted a favorable outcome with a sensitivity of 61 %, positive predictive value of 90 %, and AUC of 0.81 [13].

Concerns have been raised about the accuracy of GCS scoring in intubated patients and those receiving analgesics, sedatives, and paralytics since verbal scores cannot be assessed in these patients. There are varying approaches to this problem such as assigning the lowest possible score or adding “T” to the sum of the motor and eye components.

Nearly, 80 % of 166 studies reviewed did not report how they handled untestable GCS features such as intubation or swollen eyelids [14]. A linear regression model derived from a cohort of non-neurologic patients (most with a GCS sum score of 15) was developed to predict the verbal score based on eye and motor response [15, 16]; this has not gained wide acceptance. A survey of 71 Level I trauma centers showed that only 55 % could identify patients receiving neuromuscular blockade (NMB), and 63 % could identify intubated patients [17]. Furthermore, data from a large academic trauma center in the UK showed decreasing correlation between admission GCS and clinical outcomes over time, perhaps reflecting that GCS ratings are less accurate as use of analgesics, sedatives, and NMB have become more common [18].

FOUR Score

The full outline of unresponsiveness (FOUR) score, introduced in 2005, provides additional information not captured by the GCS including details about brainstem reflexes and respiratory drive and an opportunity to recognize the locked-in syndrome [19]. The FOUR score has excellent interrater reliability and validity equivalent to the GCS (overall κ statistic of 0.82), and may discriminate better among severe consciousness disorders. Among patients with the lowest sum GCS of 3, 25 % have the lowest FOUR score of zero, and scores range from 0 to 8 in that subset [19]. The FOUR score has been further validated in the medical ICU [20], the ED [21], and among ICU nurses with varying neurologic experience [22]. The FOUR score performed better than the GCS for exact interrater agreement, but similar for agreement within ± 1 score point [23]. Another study involving 907 critically ill patients showed a weighted κ of 0.92 which was similar whether the patient was mechanically ventilated or not [24].

A pooled analysis of four prospective validation studies showed an AUC of 0.88 for the total FOUR score and 0.87 for the GCS score in predicting outcome [25] and for patients with sum GCS of 3, a FOUR score of ≥ 2 provided maximum sensitivity and specificity for the prediction of in-hospital mortality. In another study, no patient with a FOUR score ≤ 4 at exam days 3–5 after cardiac arrest survived the hospitalization, and a two-point improvement in FOUR score in serial examinations (but not the GCS) was associated with survival. Sensitivities, specificities, positive, and negative predictive values were comparable between the two scales for cardiac arrest [26]. The FOUR score predicted mortality and poor functional outcome in one TBI study [27] and performed comparably with the GCS in another study [28].

Assessment of Pupils

A fixed dilated pupil in the setting of supratentorial brain injury is thought to represent brain herniation with third nerve and brainstem compression, though evidence of this pathology is absent in some cases [29]. The odds for poor outcomes are increased approximately 7-fold among patients with bilateral nonreactive pupils, and 2.5- to 3-fold with a unilaterally non-reactive pupil [30]. Patients whose pupils are non-reactive have a 68 % mortality vs. 7 % in those with brisk pupillary responses. With a sum GCS of 3, mortality ranges from 22 to 75 % if pupils were reactive, increasing to 80–100 % if pupils were fixed and dilated [7, 9, 31]. A poor functional outcome (GOS 1–3) occurs in 98.6 % of those with bilateral fixed dilated pupils, 72.4 % with a unilateral fixed pupil, and 74.5 % with bilateral reactive pupils [7]. Factors such as external facial and eye trauma, prior eye surgery, and administration of anticholinergic medications could confound this assessment and must be taken into account when evaluating pupillary reactivity. All patients with acute brain injury deserve aggressive resuscitation on presentation and the *duration* of pupil non-reactivity and potential surgical evacuation of acute mass lesions should be considered before deeming the prognosis unfavorable, as pupil examination can be dynamic and non-reactivity is occasionally reversible [32, 33].

Pupil size and reactivity typically are measured subjectively with a flashlight. However, significant inter-examiner variability afflicts standard pupil assessments [34–36]. Several newer devices (e.g., NeuroOptics, Colvard, Procyon) measure pupil diameter, and some incorporate infrared imaging, digital image capture, and automated measurement of device-specific calculations such as the minimum and maximum pupil diameter, percent decrease in response to photostimuli, and constriction velocity, among other variables [37, 38]. These devices have been tested widely in many populations, but less extensively among brain-injured patients, where they have been shown to detect impaired pupillary responses during herniation or other clinical events [37, 39], and improve accuracy, sensitivity, and reproducibility [36, 38] and provide device-specific metrics such as the Neurological Pupil index (NPI) [40]. Additional research is necessary to confirm any potential benefits from these devices in caring for brain-injured patients.

Discussion

Coma scales allow a more objective measure of neurologic examination, facilitate communication, assist in outcome prediction, and aid in documenting injury severity. The GCS, considered the standard coma scale, is incorporated in many clinical scoring tools but newer studies raise

concerns about variability in GCS assessment and accurate categorization of intubated patients. The FOUR score provides additional information about brainstem reflexes and respiratory drive, but has not been as systematically studied, particularly relative to clinical outcomes. The FOUR score and GCS have comparable good to excellent inter-rater reliability, but both can be confounded by sedatives and NMB medications. The FOUR score may have an advantage because it does not include a verbal score and does include pupillary assessment that is most resistant to sedative effects.

Pain, Agitation, and Delirium Assessment

Summary of the Literature: Assessing Pain for Brain-Injured Patients

Pain remains a common symptom among ICU patients [41], and recent practice guidelines for ICU PAD strongly recommended that all adult ICU patients be routinely monitored for pain [42] using patient self-report with the Numeric Rating Scale 0–10 (NRS) as the preferred initial approach.

For patients unable to self-report, using either the Behavioral Pain Scale (BPS) [43] or the Critical Care Pain Observation Tool (CCPOT) [44].

Brain-injured patients in NCCU are known to experience more significant pain than initially presumed, and if undertreated, the quality of recovery may be reduced [45]. In addition, a diagnosis of coma, vegetative state or unresponsive wakefulness state (UWS), and MCS, may further impact pain perception by these patients, and even more significantly, recognition of that pain by clinicians. Noxious stimuli can activate key nodes in the pain matrix in these patients [46] suggesting possible pain perception and clinicians should treat patients with severe disorders of consciousness as if they could perceive pain [47].

Neurocritical care patients can often assess their own pain using a tool such as the NRS, which can be elicited in 70 % [48], with BPS assessable in the remainder; both with good inter-rater agreement (0.92 and 0.83, respectively). Assessing pain in patients with severe disorders of consciousness such as MCS and UWS is a greater challenge, but is possible with Nociception Coma Scale (NCS) that assesses similar components to the BPS and CCPOT [49], with good to excellent concurrent validity and inter-rater agreement. More recent studies suggest that the visual subscale does not discriminate noxious stimuli, and its exclusion increased sensitivity from 46 to 73 % with specificity of 97 % and accuracy of 85 % (NCS-R) [50]. A score of 4 on the NCS-R was identified as a threshold value to detect a response to noxious stimuli.

Discussion

The recent PAD guidelines place an increased emphasis on pain recognition and treatment before dealing with sedation, and almost all neurocritical care patients, even those with severe impairments of consciousness, can be assessed for pain.

Summary of the Literature: Assessing Sedation for Brain-injured Patients

Sedation for neurocritical care patients is paradoxically necessary yet fundamentally undesirable since it may cloud accurate neurological assessment [51]. Recent extensive psychometric testing suggest that both the Richmond Area Sedation Scale (RASS) and Sedation–Agitation Scale (SAS) scored the highest for validity, reliability, feasibility, and relevance [52], in keeping with recommendations of the 2013 PAD guidelines that these two scales be used to assess ICU sedation [42].

The bispectral index (BIS) monitor shows excellent correlations with the RASS and SAS scales in neurocritical care patients [53] both with and without sedative medications, and addition of BIS monitoring to the Ramsay scale [54] resulted in nearly 50 % less propofol usage, reduced use of high-dose propofol, and was associated with a faster time to waken. However, the contribution of drug induced sedation and underlying neurological disease to BIS values remains uncertain, and the technique is not widely used in brain-injured patients.

The risks, benefits, and role of sedation interruption or wake-up tests for brain-injured patients remain uncertain. A meta-analysis of five randomized trials of daily sedation interruption in 699 non-neurologic patients showed no reduction in duration of mechanical ventilation, length of ICU and hospital stay, or mortality [55]. Sedation interruption in patients without neurological disease may result in higher daily doses of sedatives with higher nurse ratings of workload but no difference in time to extubation or lengths of stay [56]. Among neurocritical care patients with TBI or subarachnoid hemorrhage (SAH) propofol interruption results in ICP increases [57], though these are of uncertain clinical significance. Helbok et al. studied 20 severely brain-injured patients with multimodal neuromonitoring during interruption of sedation [58]; only one new neurologic deficit was detected (2 %), but one-third of wake-ups were aborted due to ICP crisis, agitation, or desaturation.

Discussion

Though not as extensively tested among the neurocritical population, the superior psychometrics associated with the

RASS and SAS have been confirmed in many ICU patient groups, and both scales have been applied to these patients in multiple studies. The addition of processed EEG systems to ICU sedation likely has its greatest benefits in more deeply sedated patients particularly those receiving intermittent or continuous NMB. In these patients, routine clinical assessment is less reliable. Additional study is required before strong recommendations can be made.

Summary of the Literature: Assessing Delirium in Brain-injured Patients

Delirium in general ICU patients is associated with increased mortality, prolonged ICU and hospital length of stay, and long-term cognitive impairment [42]. Routine monitoring for delirium with either the Confusion Assessment Method for the ICU (CAM-ICU) or the Intensive Care Delirium Screening Checklist (ICDSC) was strongly recommended by the 2013 PAD Guidelines.

While delirium assessment with the CAM-ICU is feasible in some neurocritical care patients—a delirium incidence of 43 % was reported in one stroke unit [59], generalizability of this data is limited because 55 % of admitted patients were excluded due to higher NIH stroke scales and lower GCS scores, only 7 % required mechanical ventilation, and only 38 % received any doses of analgesia or sedation. Among 114 patients with intracerebral hemorrhage, the CAM-ICU was positive in 27 % of patients and was predictive of poor outcome (modified Rankin score > 2) at 28 days, but not at 3 or 12 months, and was predictive of poor quality of life [60]. A multicenter study of 151 neurocritical care patients (including 43 % mechanically ventilated) revealed that delirium assessments with the ICDSC could be performed 76 % of the time, with an incidence of delirium of 14 % [48].

Unlike the CAM-ICU [61], the ICDSC recommends that changes in wakefulness and attention directly attributable to recent sedative medication not be scored as positive ICDSC points [62], an important distinction given the increasing concern that delirium assessment can be confounded by residual sedation [41, 48, 63, 64].

Discussion

Defining and treating delirium among ICU patients remains challenging and fraught with potential confounders, including persisting sedation and progression of underlying neurological issues. Patients were 10.5 times more likely to be scored delirious ($P < 0.001$) if the CAM-ICU assessment was performed before (when median RASS score was -2) rather than after daily sedation interruption [64], and outcomes with sedation-related delirium were similar to

patients who never had delirium, while delirium not related to sedation was associated with much worse outcomes. Such confounding of delirium assessment may be minimized by only assessing patients with a SAS level of at least 3 (follow commands), patients with at least 3 of the 4 Kress wakefulness criteria [65], or a RASS of at least -1 (given the findings of Haenggi and Patel).

Conflict of interest Jennifer Fugate and Richard Riker have declared no conflicts of interest.

Appendix 1: Participants in the International Multi-disciplinary Consensus Conference on Multimodality Monitoring

Peter Le Roux, MD, FACS
Brain and Spine Center,
Suite 370, Medical Science Building,
Lankenau Medical Center,
100 East Lancaster Avenue, Wynnewood, PA 19096, USA.
Tel: +1 610 642 3005,
Fax: 610 642 3057,
lerouxp@mlhs.org

David K. Menon, MD, PhD, FRCP, FRCA, FFICM, FMedSci
Head, Division of Anaesthesia, University of Cambridge,
Consultant, Neurosciences Critical Care Unit,
Box 93, Addenbrooke's Hospital,
Cambridge CB2 2QQ, UK
dkm13@wbic.cam.ac.uk

Paul Vespa, MD, FCCM, FAAN, FNCS
Professor of Neurology and Neurosurgery,
Director of Neurocritical Care,
David Geffen School of Medicine at UCLA,
Los Angeles, CA 90095, USA
PVespa@mednet.ucla.edu

Giuseppe Citerio,
Director NeuroIntensive Care Unit,
Department of Anesthesia and Critical Care,
Ospedale San Gerardo, Monza.
Via Pergolesi 33, Monza 20900, Italy
g.citerio@hsgerardo.org

Mary Kay Bader, RN, MSN, CCNS, FAHA, FNCS
Neuro/Critical Care CNS,
Mission Hospital,
Mission Viejo CA 92691, USA
Marykay.Bader@stjoe.org

Gretchen M. Brophy, PharmD, BCPS, FCCP, FCCM
Professor of Pharmacotherapy & Outcomes Science and
Neurosurgery,

Virginia Commonwealth University,
 Medical College of Virginia Campus,
 410 N. 12th Street,
 Richmond, VA 23298-0533, USA
 gbrophy@vcu.edu

Michael N. Diringer, MD
 Professor of Neurology, Neurosurgery & Anesthesiology,
 Chief, Neurocritical Care Section,
 Washington University,
 Dept. of Neurology, Campus Box 8111,
 660 S Euclid Ave.,
 St. Louis, MO 63110, USA
 diringer@neuro.wustl.edu

Nino Stocchetti, MD
 Professor of Anesthesia and Intensive Care,
 Department of Physiopathology and Transplant,
 Milan University,
 Director Neuro ICU,
 Fondazione IRCCS CàGrandaOspedale Maggiore Policlinico,
 Via F Sforza, 35 20122 Milan, Italy
 stocchet@policlinico.mi.it

Walter Videtta, MD
 ICU Neurocritical Care,
 Hospital Nacional 'Prof. a. Posadas',
 El Palomar-Pcia. de Buenos Aires,
 Argentina
 wvidetta@ar.inter.net

Rocco Armonda, MD
 Department of Neurosurgery,
 MedStar Georgetown University Hospital,
 Medstar Health, 3800 Reservoir Road NW,
 Washington, DC 20007,
 USA
 Rocco.Armonda@gmail.com

Neeraj Badjatia, MD
 Department of Neurology,
 University of Maryland Medical Center,
 22 S Greene St.,
 Baltimore, MD 21201,
 USA
 nbadjatia@umm.edu

Julian Boesel, MD
 Department of Neurology,
 Ruprecht-Karls University,
 Hospital Heidelberg, ImNeuenheimer Feld 400,
 D-69120 Heidelberg,
 Germany
 Julian.Boesel@med.uni-heidelberg.de

Randal Chesnut, MD, FCCM, FACS
 Harborview Medical Center,

University of Washington, Mailstop 359766,
 325 Ninth Ave.,
 Seattle, WA 98104-2499,
 USA
 chesnutr@u.washington.edu

Sherry Chou, MD, MMSc
 Department of Neurology,
 Brigham and Women's Hospital,
 75 Francis Street,
 Boston, MA 02115,
 USA
 schoul@partners.org

Jan Claassen, MD, PhD, FNCS
 Assistant Professor of Neurology and Neurosurgery,
 Head of Neurocritical Care and Medical Director of the
 Neurological Intensive Care Unit,
 Columbia University College of Physicians & Surgeons,
 177 Fort Washington Avenue, Milstein 8 Center room 300,
 New York, NY 10032,
 USA
 jc1439@cumc.columbia.edu

Marek Czosnyka, PhD
 Department of Neurosurgery,
 University of Cambridge,
 Addenbrooke's Hospital, Box 167,
 Cambridge, CB20QQ
 United Kingdom
 mc141@medschl.cam.ac.uk

Michael De Georgia, MD
 Professor of Neurology,
 Director, Neurocritical Care Center,
 Co-Director, Cerebrovascular Center,
 University Hospital Case Medical Center,
 Case Western Reserve University School of Medicine,
 11100 Euclid Avenue,
 Cleveland, OH 44106,
 michael.degeorgia@uhhospitals.org

Anthony Figaji, MD, PhD
 Head of Pediatric Neurosurgery,
 University of Cape Town,
 617 Institute for Child Health,
 Red Cross Children's Hospital,
 Rondebosch, 7700 Cape Town,
 South Africa
 anthony.figaji@uct.ac.za

Jennifer Fugate, DO
 Department of Neurology,
 Mayo Clinic,
 200 First Street SW,
 Rochester, MN 55905,
 Fugate.Jennifer@mayo.edu

Raimund Helbok, MD
Department of Neurology, Neurocritical Care Unit,
Innsbruck Medical University,
Anichstr.35, 6020 Innsbruck,
Austria
raimund.helbok@uki.at

David Horowitz, MD
Associate Chief Medical Officer,
University of Pennsylvania Health System,
3701 Market Street,
Philadelphia, PA 19104,
USA
david.horowitz@uphs.upenn.edu

Peter Hutchinson, MD
Professor of Neurosurgery,
NIHR Research Professor,
Department of Clinical Neurosciences,
University of Cambridge,
Box 167 Addenbrooke's Hospital,
Cambridge CB2 2QQ,
United Kingdom
pjah2@cam.ac.uk

Monisha Kumar, MD
Department of Neurology,
Perelman School of Medicine, University of
Pennsylvania,
3 West Gates,
3400 Spruce Street,
Philadelphia, PA 19104,
USA
monisha.kumar@uphs.upenn.edu

Molly McNett, RN, PhD
Director, Nursing Research,
The MetroHealth System,
2500 MetroHealth Drive,
Cleveland, OH 44109,
USA
mmcnett@metrohealth.org

Chad Miller, MD
Division of Cerebrovascular Diseases and Neurocritical Care,
The Ohio State University,
395 W. 12th Ave, 7th Floor,
Columbus, OH 43210,
ChadM.Miller@osumc.edu

Andrew Naidech, MD, MSPH
Department of Neurology,
Northwestern University Feinberg SOM 710,
N Lake Shore Drive, 11th Floor,
Chicago, IL 60611
ANaidech@nmff.org

Mauro Oddo, MD
Department of Intensive Care Medicine,
CHUV University Hospital, BH 08-623,
Faculty of Biology and Medicine University of Lausanne,
1011 Lausanne, Switzerland
Mauro.Oddo@chuv.ch

Dai Wai Olson, RN, PhD
Associate Professor of Neurology, Neurotherapeutics and
Neurosurgery,
University of Texas Southwestern,
5323 Harry Hines Blvd.,
Dallas, TX 75390-8897,
USA
daiwai.olson@utsouthwestern.edu

Kristine O'Phelan, MD
Director of Neurocritical Care,
Associate Professor, Department of Neurology,
University of Miami, Miller School of Medicine,
JMH, 1611 NW 12th Ave, Suite 405,
Miami, FL 33136
USA
kophelan@med.miami.edu

Javier Provencio, MD
Associate Professor of Medicine,
Cerebrovascular Center and Neuroinflammation
Research Center,
Lerner College of Medicine,
Cleveland Clinic,
9500 Euclid Ave, NC30,
Cleveland, OH 44195,
USA
provenj@ccf.org

Corina Puppo, MD
Assistant Professor, Intensive Care Unit,
Hospital de Clinicas, Universidad de la República,
Montevideo,
Uruguay
coripuppo@gmail.com

Richard Riker, MD
Critical Care Medicine,
Maine Medical Center,
22 Bramhall Street,
Portland, MA 04102-3175,
USA
RRRiker@cmmaine.com

Claudia Robertson, MD
Department of Neurosurgery,
Medical Director of Center for Neurosurgical Intensive Care,
Ben Taub Hospital,
Baylor College of Medicine,

1504 Taub Loop, Houston, TX 77030,
USA
claudiar@bcm.tmc.edu

J. Michael Schmidt, PhD, MSc
Director of Neuro-ICU Monitoring and Informatics,
Columbia University College of Physicians and Surgeons,
Milstein Hospital 8 Garden South, Suite 331,
177 Fort Washington Avenue,
New York, NY 10032,
USA
mjs2134@columbia.edu

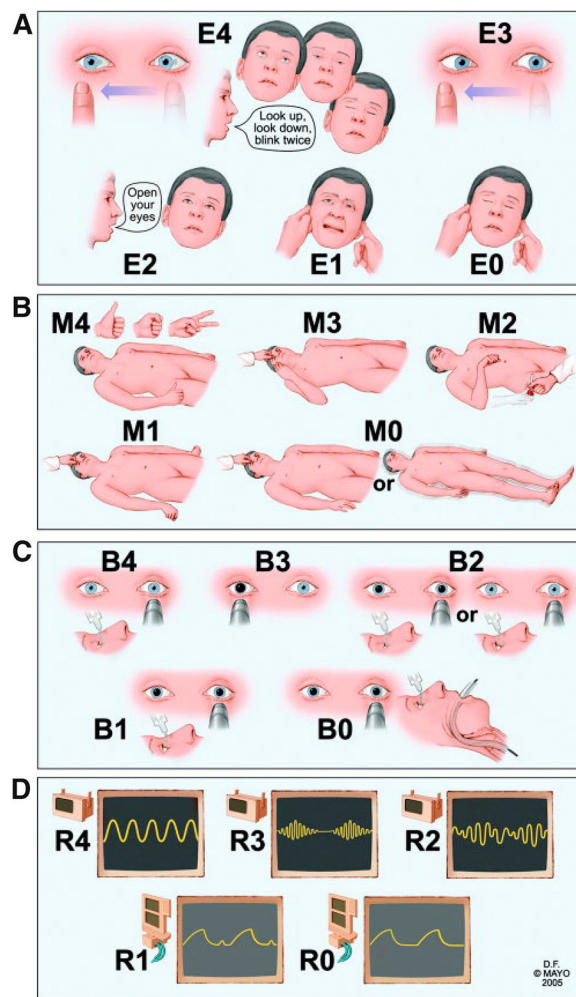
Fabio Taccone, MD
Department of Intensive Care, Laboratoire de
Recherche Experimentale,
Erasmus Hospital,
Route de Lennik, 808,
1070 Brussels,
Belgium
ftaccone@ulb.ac.be

Appendix 2: Clinical Scales in the Neurocritical Care Unit

The Glasgow Coma Scale and Score

Glasgow Coma Scale for head injury	
Glasgow Coma Scale, eye opening	
Spontaneous	4
To loud voice	3
To pain	2
None	1
Verbal response	
Oriented	5
Confused, disoriented	4
Inappropriate words	3
Incomprehensible sounds	2
None	1
Best motor response	
Obeys	6
Localizes	5
Withdraws (flexion)	4
Abnormal flexion posturing	3
Extension posturing	2
None	1

The FOUR Score



The Nociception Coma Scale

Motor response	
3—Localization to noxious stimulation	
2—Flexion withdrawal	
1—Abnormal posturing	
0—None/flaccid	
Verbal response	
3—Verbalisation (intelligible)	
2—Vocalisation	
1—Groaning	
0—None	
Visual response	
3—Fixation	
2—Eyes movements	
1—Startle	

continued

0—None
Facial expression
3—Cry
2—Grimace
1—Oral reflexive movement/startle response
0—None

SAS

Riker Sedation–Agitation Scale (SAS) (82)

7 Dangerous agitation	Pulling at endotracheal tube (ETT), trying to remove catheters, climbing over bedrail, striking at staff, thrashing side-to-side
6 Very agitated	Does not calm despite frequent verbal reminding of limits, requires physical restraints, biting ETT
5 Agitated	Anxious or mildly agitated, attempting to sit up, calms down to verbal instructions
4 Calm and cooperative	Calm, awakens easily, follows commands
3 Sedated	Difficult to arouse, awakens to verbal stimuli or gentle shaking but drifts off again, follows simple commands
2 Very sedated	Arouses to physical stimuli but does not communicate or follow commands, may move spontaneously
1 Unarousable	Minimal or no response to noxious stimuli, does not communicate or follow commands

RASS

See Table 1.

Table 1 Richmond agitation–sedation scale

Score	Term	Description
+4	Combative	Overtly combative or violent; immediate danger to staff
+3	Very agitation	Pulls on or removes tube(s) or catheter(s) or has aggressive behavior toward staff
+2	Agitated	Frequent non-purposeful movement or patient-ventilator dyssynchrony
+1	Restless	Anxious or apprehensive but movements not aggressive or vigorous
0	Alert and calm	
–1	Drowsy	Not fully alert, but has sustained (more than 10 s) awakening, with eye contact, to voice
–2	Light sedation	Briefly (< 10 s) awakens with eye contact to voice
–3	Moderate sedation	Any movement (but no eye contact) to voice
–4	Deep sedation	No response to voice, but any movement to physical stimulation
–5	Unarousable	No response to voice or physical stimulation

References

1. Teasdale G, Jennett B. Assessment of coma and impaired consciousness. A practical scale. *Lancet*. 1974;13:81–4.
2. Juarez VJ, Lyons M. Interrater reliability of the Glasgow Coma Scale. *J Neurosci Nurs*. 1995;27:283–6.
3. Heron R, Davie A, Gillies R, Courtney M. Interrater reliability of the Glasgow Coma Scale scoring among nurses in sub-specialties of critical care. *Aust Crit Care*. 2001;14:100–5.
4. Menegazzi JJ, Davis EA, Sucov AN, Paris PM. Reliability of the Glasgow Coma Scale when used by emergency physicians and paramedics. *J Trauma*. 1993;34:46–8.
5. Rowley G, Fielding K. Reliability and accuracy of the Glasgow Coma Scale with experienced and inexperienced users. *Lancet*. 1991;337:535–8.
6. Gill M, Windemuth R, Steele R, Green SM. A comparison of the Glasgow Coma Scale score to simplified alternative scores for the prediction of traumatic brain injury outcomes. *Ann Emerg Med*. 2005;45:37–42.
7. Chamoun RB, Robertson CS, Gopinath SP. Outcome in patients with blunt head trauma and a Glasgow Coma Scale score of 3 at presentation. *J Neurosurg*. 2009;111:683–7.
8. Demetriades D, Kuncir E, Velmahos GC, Rhee P, Alo K, Chan LS. Outcome and prognostic factors in head injuries with an admission Glasgow Coma Scale score of 3. *Arch Surg*. 2004;10:1066–8.
9. Tien HC, Cunha JR, Wu SN, et al. Do trauma patients with a Glasgow Coma Scale score of 3 and bilateral fixed and dilated pupils have any chance of survival? *J Trauma*. 2006;60:274–8.
10. Tsau JW, Hemphill JC, Johnston SC, Smith WS, Bonovich DC. Initial Glasgow Coma Scale score predicts outcome following thrombolysis for posterior circulation stroke. *Arch Neurol*. 2005;62:1126–9.
11. Schwarz S, Egelhof T, Schwab S, Hacke W. Basilar artery embolism. Clinical syndrome and neuroradiologic patterns in patients without permanent occlusion of the basilar artery. *Neurology*. 1997;49:1346–52.
12. Chandra RV, Law CP, Yan B, Dowling RJ, Mitchell PJ. Glasgow coma scale does not predict outcome post-intra-arterial treatment for basilar artery thrombosis. *AJNR Am J Neuroradiol*. 2011;32:576–80.
13. Schefold JC, Storm C, Kruger A, Ploner CJ, Hasper D. The Glasgow Coma Score is a predictor of good outcome in cardiac arrest patients treated with therapeutic hypothermia. *Resuscitation*. 2009;80:658–61.
14. Starmark JE, Holmgren E, Stalhammar D. Current reporting of responsiveness in acute cerebral disorders. A survey of the neurosurgical literature. *J Neurosurg*. 1998;69:692–8.
15. Rutledge R, Lentz CW, Fakhry S, Hunt J. Appropriate use of the Glasgow Coma Scale in intubated patients: a linear regression prediction of the Glasgow verbal score from the Glasgow eye and motor scores. *J Trauma*. 1996;41:514–22.
16. Meredith W, Rutledge R, Fakhry SM, Emery S, Kromhout-Schiro S. The conundrum of the Glasgow Coma Scale in intubated patients: a linear regression prediction of the Glasgow verbal score from the Glasgow eye and motor scores. *J Trauma*. 1998;44:839–44.
17. Buechler CM, Blostein PA, Koestner A, Hurt K, Schaars M, McKernan J. Variation among trauma centers' calculation of Glasgow Coma Scale score: results of a national survey. *J Trauma*. 1998;45:429–32.
18. Balestreri M, Czosynka M, Chatfield DA, et al. Predictive value of Glasgow Coma Scale after brain trauma: change in trend over the past ten years. *J Neurol Neurosurg Psychiatry*. 2004;75:161–2.

19. Wijdicks EF, Bamlet WR, Maramattom BV, Manno EM, McClelland RL. Validation of a new coma scale: the FOUR score. *Ann Neurol*. 2005;58:585–93.
20. Iver VN, Mandrekar JN, Danielson RD, Zubkov AY, Elmer JL, Wijdicks EF. Validity of the FOUR score coma scale in the medical intensive care unit. *Mayo Clin Proc*. 2009;84:694–701.
21. Stead LG, Wijdicks EF, Bhagra A, et al. Validation of a new coma scale, the FOUR score, in the emergency department. *Neurocrit Care*. 2009;10:50–4.
22. Wolf CA, Wijdicks EF, Bamlet WR, McClelland RL. Further validation of the FOUR score coma scale by intensive care nurses. *Mayo Clin Proc*. 2007;82:435–8.
23. Fischer M, Ruegg S, Czaplinski A, et al. Inter-rater reliability of the full outline of unresponsiveness score and the Glasgow Coma Scale in critically ill patients: a prospective observational study. *Crit Care*. 2010;14:R64.
24. Kramer AA, Wijdicks EF, Snavely VL, et al. A multicenter prospective study of interobserver agreement using the full outline of unresponsiveness score coma scale in the intensive care unit. *Crit Care Med*. 2012;40:2671–6.
25. Wijdicks EF, Rabinstein AA, Bamlet WR, Mandrekar JN. FOUR score and Glasgow Coma Scale in predicting outcome of comatose patients: a pooled analysis. *Neurology*. 2011;77:84–5.
26. Fugate JE, Rabinstein AA, Claassen DO, White RD, Wijdicks EF. The FOUR score predicts outcome in patients after cardiac arrest. *Neurocrit Care*. 2010;13:205–10.
27. Akavipat P, Sookplung P, Kaewsingha P, Maunsaivat P. Prediction of discharge outcome with the full outline of unresponsiveness (FOUR) score in neurosurgical patients. *Acta Med Okayama*. 2011;65:205–10.
28. Sadaka F, Patel D, Lakshmanan R. The FOUR score predicts outcome in patients after traumatic brain injury. *Neurocrit Care*. 2012;16:95–101.
29. Ropper AH, Cole D, Louis DN. Clinicopathologic correlation in a case of pupillary dilation from cerebral hemorrhage. *Arch Neurol*. 1991;48:1166–9.
30. Marmarou A, Lu J, Butcher I, et al. Prognostic value of the Glasgow Coma Scale and pupil reactivity in traumatic brain injury assessed pre-hospital and on enrollment: an IMPACT analysis. *J Neurotrauma*. 2007;24:270–80.
31. Hoffmann M, Lefering R, Rueger JM, et al. Pupil evaluation in addition to Glasgow Coma Scale components in prediction of traumatic brain injury and mortality. *Br J Surg*. 2012;99(Suppl 1):122–30.
32. Uzan M, Yentur E, Hanci M, et al. Is it possible to recover from uncal herniation? Analysis of 71 head injured cases. *J Neurosurg Sci*. 1998;42:89–94.
33. Smrcka M, Maca K, Juran V, et al. Cerebral perfusion pressure and SPECT in patients after craniocerebral injury with transtentorial herniation. *Acta Neurochir Suppl*. 2002;81:73–5.
34. Du R, Meeker M, Bacchetti P, Larson MD, Holland MC, Manley GT. Evaluation of the portable infrared pupillometer. *Neurosurgery*. 2005;57:198–203.
35. Hulst KN, Knowlton SL, Oliver JW, Wolfson T, Gamst A. A study of pupillary assessment in outpatient neurosurgical clinics. *J Neurosci Nurs*. 2006;38:447–52.
36. Meeker M, Du R, Bacchetti P, et al. Pupil examination: validity and clinical utility of an automated pupillometer. *J Neurosci Nurs*. 2005;37:34–40.
37. Larson MD, Muhiudeen I. Pupillometric analysis of the ‘absent light reflex’. *Arch Neurol*. 1995;52:369–72.
38. Taylor WR, Chen JW, Meltzer H, et al. Quantitative pupillometry, a new technology: normative data and preliminary observations in patients with acute head injury. Technical note. *J Neurosurg*. 2003;98:205–13.
39. Manley GT, Larson MD. Infrared pupillometry during uncal herniation. *J Neurosurg Anesthesiol*. 2002;14:223–8.
40. Chen JW, Gombart ZJ, Rogers S, Gardiner SK, Cecil S, Bullock RM. Pupillary reactivity as an early indicator of increased intracranial pressure: the introduction of the Neurological Pupil index. *Surg Neurol Int*. 2011;2:82.
41. Gelinas C, Klein K, Naidech AM, Skrobik Y. Pain, sedation, and delirium management in the neurocritically ill: lessons learned from recent research. *Semin Respir Crit Care Med*. 2013;34:236–43.
42. Barr J, Fraser GL, Puntillo K, et al. Clinical practice guidelines for the management of pain, agitation, and delirium in adult patients in the intensive care unit. *Crit Care Med*. 2013;41:263–306.
43. Payen JF, Bru O, Bosson JL, et al. Assessing pain in critically ill sedated patients by using a behavioral pain scale. *Crit Care Med*. 2001;29:2258–63.
44. Gelinas C, Fillion L, Puntillo KA, Viens C, Fortier M. Validation of the critical-care pain observation tool in adult patients. *Am J Crit Care*. 2006;15:420–7.
45. Gottschalk A, Yaster M. The perioperative management of pain from intracranial surgery. *Neurocrit Care*. 2009;10:387–402.
46. Laureys S, Faymonville ME, Peigneux P, et al. Cortical processing of noxious somatosensory stimuli in the persistent vegetative state. *Neuroimage*. 2002;17:732–41.
47. Schnakers C, Chatelle C, Demertzi A, Majerus S, Laureys S. What about pain in disorders of consciousness? *AAPS*. 2012;14:437–44.
48. Yu A, Teitelbaum J, Scott J, et al. Evaluating pain, sedation, and delirium in the neurologically critically ill—feasibility and reliability of standardized tools: a multi-institutional study. *Crit Care Med*. 2013;41:2002–7.
49. Schnakers C, Chatelle C, Vanhaudenhuyse A, et al. The Nociception Coma Scale: a new tool to assess nociception in disorders of consciousness. *Pain*. 2010;148:215–9.
50. Chatelle C, Majerus S, Whyte J, Laureys S, Schnakers C. A sensitive scale to assess nociceptive pain in patients with disorders of consciousness. *J Neurol Neurosurg Psychiatry*. 2012;83:1233–7.
51. Seder DB, Riker RR, Jagoda A, Smith WS, Weingart SD. Emergency neurological life support: airway, ventilation, and sedation. *Neurocrit Care*. 2012;17(Suppl 1):S4–20.
52. Robinson BR, Berube M, Barr J, Riker R, Gélinas C. Psychometric analysis of subjective sedation scales in critically ill adults. *Crit Care Med*. 2013;41(9 Suppl 1):S16–29.
53. Deogaonkar A, Gupta R, DeGeorgia M, et al. Bispectral Index monitoring correlates with sedation scales in brain-injured patients. *Crit Care Med*. 2004;32:2403–6.
54. Olson DM, Thoyre SM, Peterson ED, Graffagnino C. A randomized evaluation of bispectral index-augmented sedation assessment in neurological patients. *Neurocrit Care*. 2009;11:20–7.
55. Augustes R, Ho KM. Meta-analysis of randomized controlled trials on daily sedation interruption for critically ill adult patients. *Anaesth Intensive Care*. 2011;39:401–9.
56. Mehta S, Burry L, Cook D, et al. Daily sedation interruption in mechanically ventilated critically ill patients cared for with a sedation protocol: a randomized controlled trial. *JAMA*. 2012;308:1985–92.
57. Skoglund K, Enblad P, Marklund N. Effects of the neurological wake-up test on intracranial pressure and cerebral perfusion pressure in brain-injured patients. *Neurocrit Care*. 2009;11:135–42.
58. Helbok R, Kurtz P, Schmidt MJ, et al. Effects of the neurological wake-up test on clinical examination, intracranial pressure, brain metabolism and brain tissue oxygenation in severely brain-injured patients. *Crit Care*. 2012;16:R226.
59. Mitsova A, Kostalova M, Bednarik J, et al. Poststroke delirium incidence and outcomes: validation of the Confusion Assessment

- Method for the Intensive Care Unit (CAM-ICU). *Crit Care Med.* 2012;40:484–90.
60. Naidech AM, Beaumont JL, Rosenberg NF, et al. Intracerebral hemorrhage and delirium symptoms. Length of stay, function, and quality of life in a 114-patient cohort. *Am J Respir Crit Care Med.* 2013;188:1331–7.
 61. Frontera JA. Delirium and sedation in the ICU. *Neurocrit Care.* 2011;14:463–74.
 62. Ouimet S, Riker R, Bergeron N, Cossette M, Kavanagh B, Skrobik Y. Subsyndromal delirium in the ICU: evidence for a disease spectrum. *Intensive Care Med.* 2007;33:1007–13.
 63. Haenggi M, Blum S, Brechbuehl R, Brunello A, Jakob SM, Takala J. Effect of sedation level on the prevalence of delirium when assessed with CAM-ICU and ICDS-C. *Intensive Care Med.* 2013;39:2171–9.
 64. Patel SB, Poston JT, Pohlman A, Hall JB, Kress JP. Rapidly reversible, sedation-related delirium versus persistent delirium in the ICU. *Am J Respir Crit Care Med.* 2014;189:658–65.
 65. Kress JP, Pohlman AS, O'Connor MF, Hall JB. Daily interruption of sedative infusions in critically ill patients undergoing mechanical ventilation. *N Engl J Med.* 2000;342:1471–7.